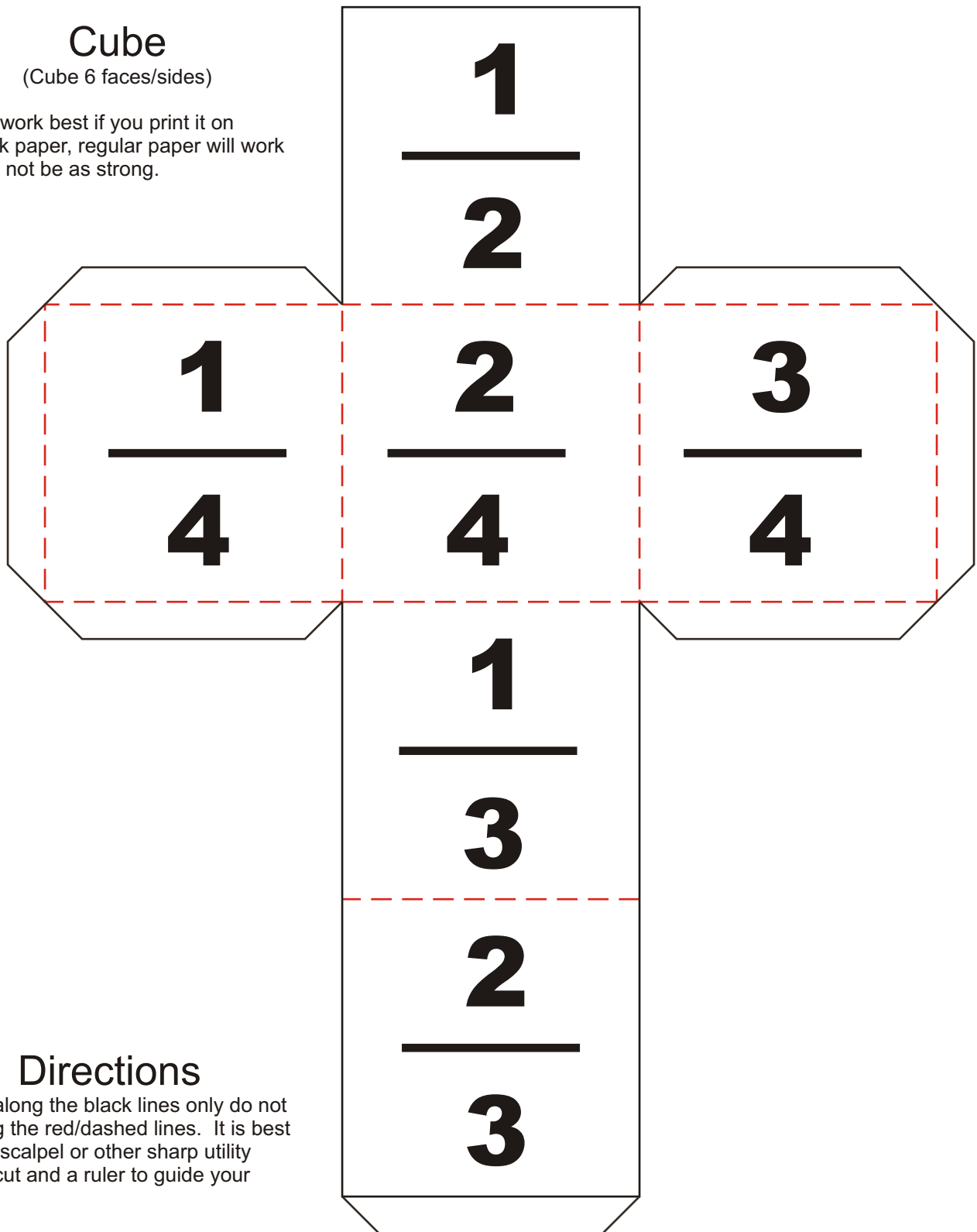


# Cube

(Cube 6 faces/sides)

This will work best if you print it on cardstock paper, regular paper will work but it will not be as strong.



## Directions

Cut out along the black lines only do not cut along the red/dashed lines. It is best to use a scalpel or other sharp utility knife to cut and a ruler to guide your cuts.

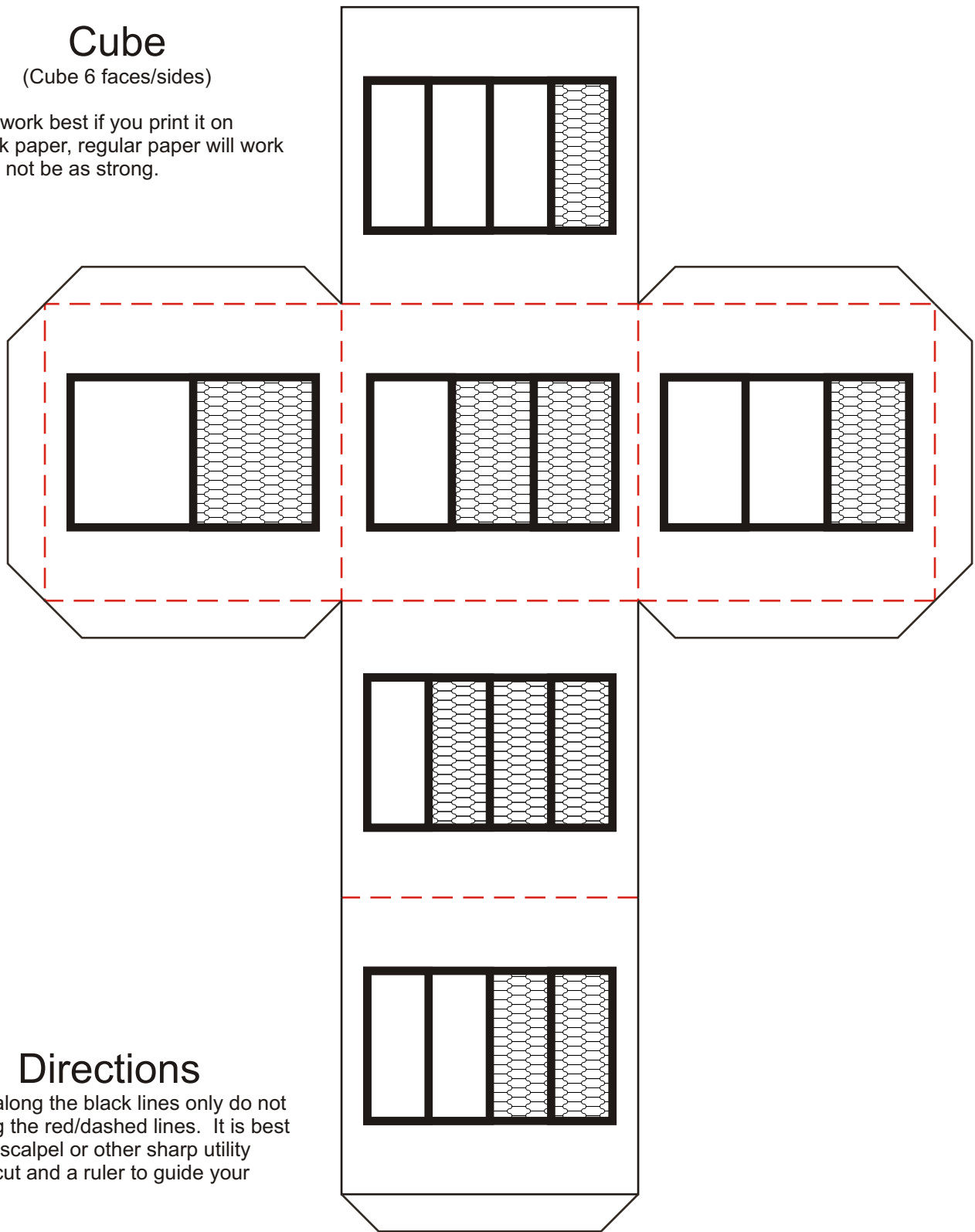
Score along the red/dashed lines, this will make it easier to fold along the red/dashed lines. (Scoring means to use a sharp pointed object and a ruler and trace along the line to make an indentation in the paper but not to cut through the paper.)

Fold along the red/dashed lines, these are the tabs that must be glued or taped to the inside of the shape to give it support.

# Cube

(Cube 6 faces/sides)

This will work best if you print it on cardstock paper, regular paper will work but it will not be as strong.



## Directions

Cut out along the black lines only do not cut along the red/dashed lines. It is best to use a scalpel or other sharp utility knife to cut and a ruler to guide your cuts.

Score along the red/dashed lines, this will make it easier to fold along the red/dashed lines. (Scoring means to use a sharp pointed object and a ruler and trace along the line to make an indentation in the paper but not to cut through the paper.)

Fold along the red/dashed lines, these are the tabs that must be glued or taped to the inside of the shape to give it support.